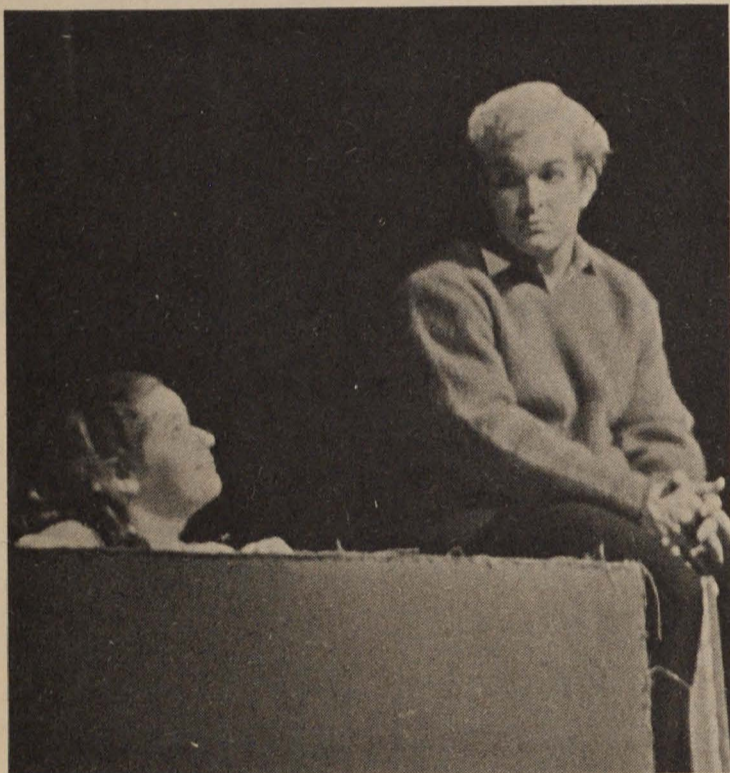


WHAT IN THE WORLD



Patty Kane, as Lucy, gives five cents worth of psychiatric assistance to disillusioned Charlie Brown, portrayed by Herb Finke. Review of the play is on page three.

In the Indo-Pakistani War, Indian forces are preparing a full-scale attack on the city of Dacca. Meanwhile in the U.N. India has officially stated it is ready to accept the U.N. cease-fire if the Bengla Desh spokesman for East Pakistan is present at the hearings.

In Northern Ireland the fighting continues, with a Protestant senator being the last of 196 victims killed in this conflict. The senator was John Barnhill, a right-wing member of the Unionist Party, and the first member of the Northern Ireland parliament to die in the last 2 years of hostilities.

Finally, coming to a peaceful note, President Nixon is in the Azores, conferring with French President George Pompidou on

the national money crisis and other problems. This is only one of the several foreign leaders with whom President Nixon will be talking in the future, including Brezhnev of Moscow and Chou-En-Lai of Peking.

Also, on December 13, the People's Republic of China decided to release two U.S. Air Force

men shot down over Korea in 1952.

Debate is going on in the U.N. concerning the Middle East crisis. Egypt is expecting a favorable outcome from the discussions. She is looking for a peace settlement that will give her back her land that was occupied by Israel during the 1967 war. Meanwhile Israel is looking for an easing of tensions on the part of the Arabs.

FIORETTI SOON TO APPEAR

As students return from Christmas vacation, so will the Fioretti return from the press. This collage of poetry, photography and art work is compiled in a work which is published twice a year. The second issue will come sometime after spring vacation.

In June editors Sherry Meyer

and Carol Wethington began working. Nearly fifteen contributors wrote with imagination and creativity to make this 1972 Fioretti the special edition it is. New Features and a modern theme emphasize the quality of work, and all will be presented in the first Fioretti edition of 1972.

ACTIVITIES GO ON AS '71 GOES OUT

ATTENTION FRESHMEN

Pre-registration for freshmen begins on Thursday, Dec. 16 at noon. All Freshmen students must have a conference with an advisor in the Academic Advisement Center prior to pre-registration. The Center is located in the Student Activities Center Building, Room 1. The hours for the Center through Friday, Dec. 17 will be 9:00 a.m. to noon and 1:00 p.m. to 5:00 p.m. It will also be open from 7:30 p.m. to 9:30 p.m. on Wednesday evening.

EXPANDED COUNSELING AND ADVISEMENT SERVICES

The Office of Counseling Services is now open on Tuesday evening from 6:15 p.m. to 8:30 p.m. If you would like to discuss any vocational, educational or personal difficulties, the counselors are available to assist you. The Counseling Offices are located on the first floor of the Student Activities Center adjacent to the Office of Student Services.

The Academic Advisement Center is now open from 6:15 p.m. to 8:30 p.m. on Tuesday and Thursday evenings. If you need any information about a particular course or major area

or if you are considering withdrawal from or enrollment in a course, faculty members are available to assist you.

If information is needed on either of these services, contact Mr. John Van Hoose, ext. 262.

CHRISTMAS CONVOCATION

On Thursday at 12:30 the annual Christmas Convocation will be held in the Marian Hall Auditorium. Four groups will be performing: Chorale, Cantor's Chanters, Concert Band, and Brass Choir. Under the direction of Cantor Robert Zalkin the Chorale will present "Shubert's Mass in G" while Cantor's Chanters will entertain with "Dance of the Gifts." Mr. Sweeney will be directing the Concert Band in "Hymns of Praise" and "Christmas for Winds" and the Brass Choir will present "Antiphony No. 2 for Double Brass Choir" by Giovanni Gabrieli.

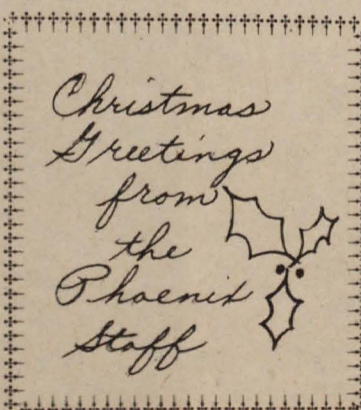
DOYLE HOSTS OPEN HOUSE

Wednesday evening Doyle Hall will sponsor their annual Christmas Open House. Beginning at 7:00 p.m. and lasting until 11:45 p.m., this event will highlight cartoons which will be-

gin at 7:15, a ping-pong tournament at 8:00 p.m. and Santa Claus himself will be on hand to greet all the visitors. Refreshments will also be served to the guests. Students are encouraged to take advantage of this activity.

PUBLIC SERVICE ANNOUNCEMENT

Business and industry in Indianapolis is interested in talking with graduating college seniors. What about? Well, about Indianapolis -- the career possibilities here and about particular companies. On December 29 and 30, 22 of Indianapolis' leading firms will send personnel representatives to the 38th Street IUPUI campus to talk with interested college seniors. So, if you're graduating from college soon and are interested, call the Indianapolis Chamber of Commerce at 635-6423.



Calvin Mitchell assists Maxine Ray (standing) and Debbie Burton in decorating a door in Clare Hall during Saturday's Open House.

FACULTY EVALUATION DUE

On Tuesday and Wednesday of this week, faculty evaluation forms are being passed out in all classes for the students to complete. This is being promoted by an Academic Affairs committee, consisting of four students and two faculty members, and is sponsored by Student Board.

The committee has put together a form in which the student is asked to evaluate the

teacher, book, and course content on a scale of one to seven. Past evaluation sheets from Marian and various other schools were appraised by the committee in order to come up with a fitting form to be used for this fall semester.

Results of this evaluation are made known to the individual teacher, his department chairman and the academic dean.

ROLES SWITCH, STUDENTS DO THE EVALUATING

Yesterday and today students are being asked in the classrooms to evaluate the faculty (although the book and course content are included, the emphasis is on the teacher). This project has potential as one of the student's strongest voices in the government of the college.

The faculty person is evaluated on his effectiveness as a teacher, just as the student is evaluated as a student through his grades. Therefore students and faculty both must participate fully and honestly. The student has to rate the faculty member on his teaching abilities and methods, not on personal likes or dislikes. The faculty, then, must accept the feedback as suggestions for constructive, beneficial changes.

After the results are tabulated they are given to the faculty member, the department chairman and the Academic Dean. If a faculty

member consistently, in various courses and over a period of two or more semesters receives a poor rating, the probability is that he is a poor teacher (that he is not suitable for his position and most likely the teaching profession). This is where the head of the department should definitely move in and recommend that this teacher be dismissed from his position here at Marian. Then it is for the Academic Dean to act. If the evaluations are not carried out to this extent, then what is their "ultimate reality?"

I feel that Marian College has seen some incompetent teachers and will continue to see others in the future. There is the need for a proper means of sifting out the least profitable teachers from Marian if it is to continue as an adequate institution of higher learning. Presently the faculty evaluation is the most reliable method for doing so. I hope that all take an interest in this procedure. *C. Q.*

SIGHTS AND SOUNDS OF CHRISTMAS AT MARIAN

Christmas is a time of the seasons. It is a time when the laughter of children captivates the heart and soul of every Christmas shopper. It is a time when every department store hires a part-time Santa Claus and every house has its traditional Christmas tree. And it is also a time when people become mellow and warm-for it is the Christmas season--a fit time to give of oneself.

This reflection of Christmas joy has become evident at Marian. We see it throughout the girls' dorm which is decorated with lighted Christmas trees, festive crepe paper and creative designs on the doors. Pixie Week at Clare Hall contributed to the spirit of the "happy holidays" as a prelude to Christmas. The well-liked Peanuts character Charlie Brown came to life this holiday season as the Drama Depart-

ment presented "You're a Good Man, Charlie Brown." With the annual Christmas party-dance sponsored by the Social Council, the Christmas celebration with refreshments and cartoons at Doyle Hall and a special Christmas Midnight mass, the Marian campus saw much spirit and enthusiasm as the 1971 Christmas season rolled around.

The beauty of the season is reflected in the homey things like songs, a manger scene, the scent of pine and jingling bells. Around this time we see and hear of all the beauty. If it has never touched your innermost soul before, then may you be blessed with the joy and peace of it now.

Carol Roesler

CAMPUS CAROUSINGS

WEDNESDAY, Dec. 15

All Day - Pre-registration for Sophomores - Room 207
8:30 a.m. - 4:30 p.m. - Peace Corps/VISTA Representative on Campus - Auditorium Foyer
7:00 - 11:30 p.m. - Doyle Hall Open House & Christmas Party

THURSDAY, Dec. 16

All Day - Pre-registration for Freshmen - Room 207
12:30 p.m. - Music Department Christmas Convocation M H Auditorium
4:00 - 6:00 p.m. - UBI Christmas Party for Inner-City Grade Schoolers - Sac Lounge
8:00 p.m. - Social Council Film: "BABY THE RAIN MUST FALL" - M H Auditorium

FRIDAY, Dec. 17

CHRISTMAS RECESS AFTER LAST CLASS
All Day - Pre-registration for Freshmen - Room 207
8:00 p.m. - Basketball: KNIGHTS vs Kentucky State - HERE

SATURDAY, Dec. 18

8:00 p.m. - Basketball: KNIGHTS vs IU-PUI of Ft. Wayne THERE

EDITOR'S NOTE

JOHN COSTERISAN'S resignation from the *Phoenix* was officially announced at Sunday's Student Board meeting.

TO THE EDITOR

This is the first newsletter to be published bimonthly to explain to the student body the results of your Food Service Committee meetings. The contents of each will contain the items discussed during each meeting and the action the Food Service Director plans to take on these comments. This letter will bring you up-to-date on these meetings held so far this year.

The first meeting was held during the middle of October. The Food Service Director (Ron Morgan) explained the Special Events that were to be held during the school year and gave in-

formation about the Salad Bar and Sandwich Bar that were added to the cafeteria. Several comments were made by the committee concerning things they would like to see changed. Feedback to Ron was light because of the newness of the year.

The second meeting was more productive. The committee made comments on many items, as follows: 1) poor spaghetti noodles; 2) poor quality of salad dressings; 3) too many onions on everything; 4) good comments on salad bar; 5) good

(continued on page 3)

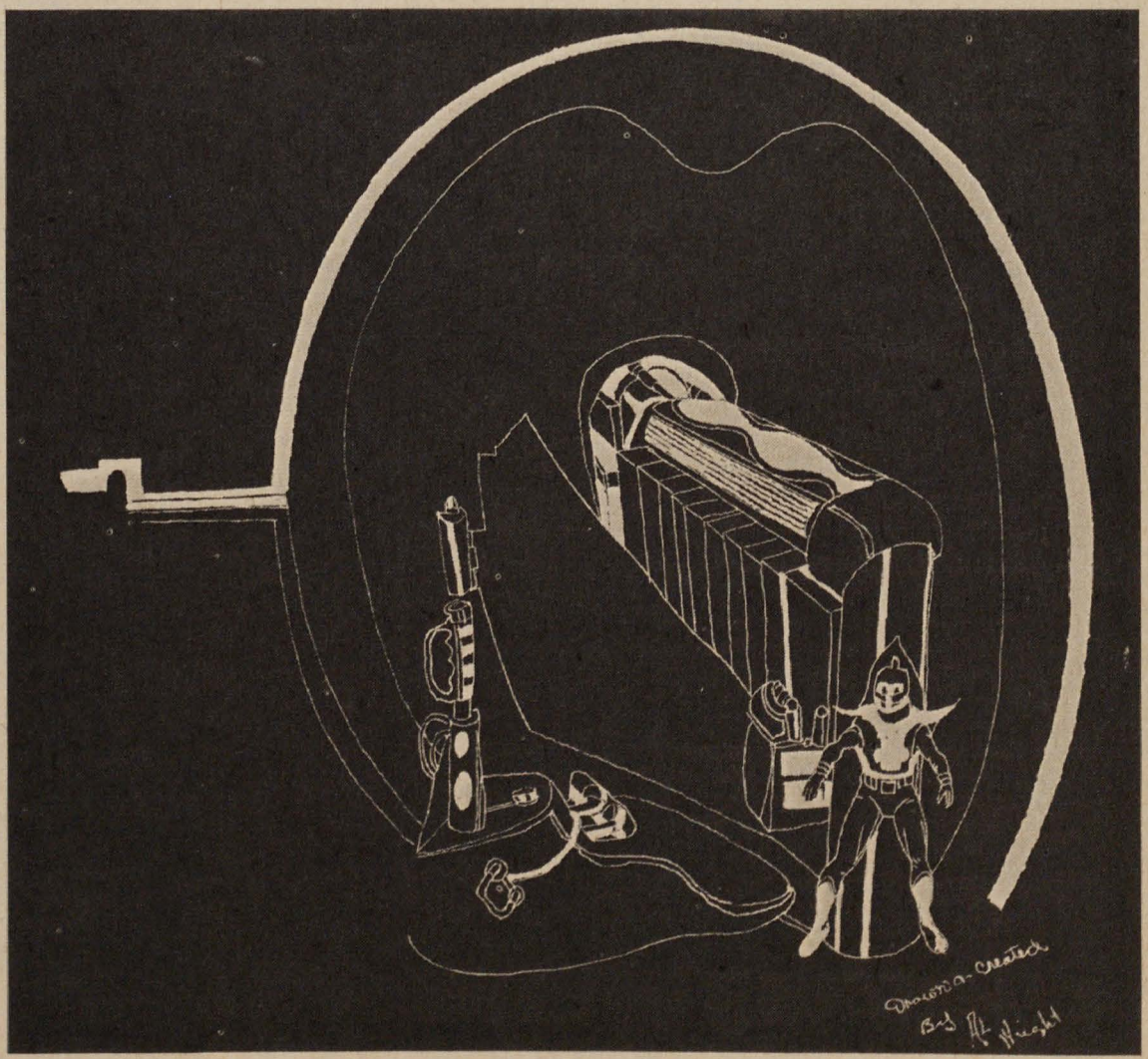
MARIAN COLLEGE PHOENIX

Volume XXXVI Number 10

Published weekly by students of Marian College. The editorial viewpoints expressed do not necessarily reflect those of the administration or the student body of Marian College, but rather the viewpoint of the individual writer.

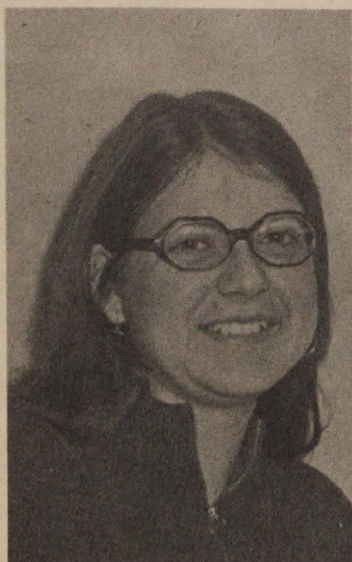
Subscription rate is \$3.50 per year. Advertising rates are available upon request. Address all correspondence to MARIAN COLLEGE PHOENIX, 3200 Cold Spring Rd., Indianapolis, Indiana, 46222.

Editor Cathy Andre
News Editor Carol Roesler
Feature Editor Ellen Dugan
Sports Editor Ken Hornback
Photography Marigrace Platt, Pat Arcady
Writers Ingrid Augspols, Ken Aust, Mary Bradley, Mary Beth Blankman, Andy Buckley, Marianne Lamm, Cherie Kraft, Dana Robertson, Clare Stickman, Peggy Smith
Layout and Composition Agnes Bacala, Herb Finke, Sharon Graczyk, Sister Donna Graham, Dan Janich, Angie Mauer, Martin Merkel, Marita Scheidler, Marty Smith, Margie Bedel, Kathy Giesting, Mary Henshaw, Jane Kelley, Janet Kelley, Carol Luthman, Carol Lenik, Becky Raibley, Carmen Saniz, Marcia Smith
Business Manager Vince Danno
Circulation Peggy Lauer, Ruth Mauer, Mary Pflanz
Artists Cathy Frey, Al Wright
Faculty Advisor Sr. Frances Bosse



Peace on earth?

Spotlighting



DONNA MEHLING

The stillness of a library has become an important aspect in the life of Donna Mehling, a student library assistant here on campus. Donna, a freshman from Ferdinand, Indiana, has an interesting background in library work.

RASHOMON CAST ANNOUNCED

by Marianne Lamm

The Marian College Theatre Department will present "Rashomon," a play based on an ancient Japanese legend. The play concerns a murder and rape performed upon a samuria and his wife. As the story unfolds, the audience sees the account of the same rape and murder through the eyes of four completely different people. The play is written in a contemporary style with lots of lusty humor.

The cast includes Pat O'Hara as the samuria, Janet Kitchen as the samuria's wife, Roger Neuman as the priest, Gene

Last April she was one of three students chosen by the American Library Association to attend the *White House Conference on Youth* in Denver, Colorado. In June she attended the *American Library Association Convention* in Dallas, Texas where she reported on the White House Conference. In August she attended a *Student Leadership Conference* for students interested in library and media as a profession. This conference was held at the University of New Hampshire.

Donna also attended the annual meeting of the Indiana Student Media Association which met at Warren Central High School on October 30.

Presently a French major, she is looking forward to a career in the field of Library Science in the next few years.

Donna, who likes to meet people, finds "a personal, community kind of atmosphere" here at Marian very pleasant. She became knowledgeable of and interested in Marian through a cousin who graduated last May.

Bourke as the woodcutter, Bob Brause as the wigmaker, Donna Meyers as the medium, and Phyllis Brozowski as the mother.

Rashomon was performed in 1950 and won an academy award for the best foreign film. In 1959 it was put on Broadway by Fay and Mike Karin. It starred Rod Steiger and Clare Bloom. An American version of the play "The Outrage" starred Paul Newman and Clare Bloom. The movie was widely acclaimed for its excellence.

"This will be one of the more colorful shows done this year," says Don Johnson, the theatre Director.

(continued from page 2)

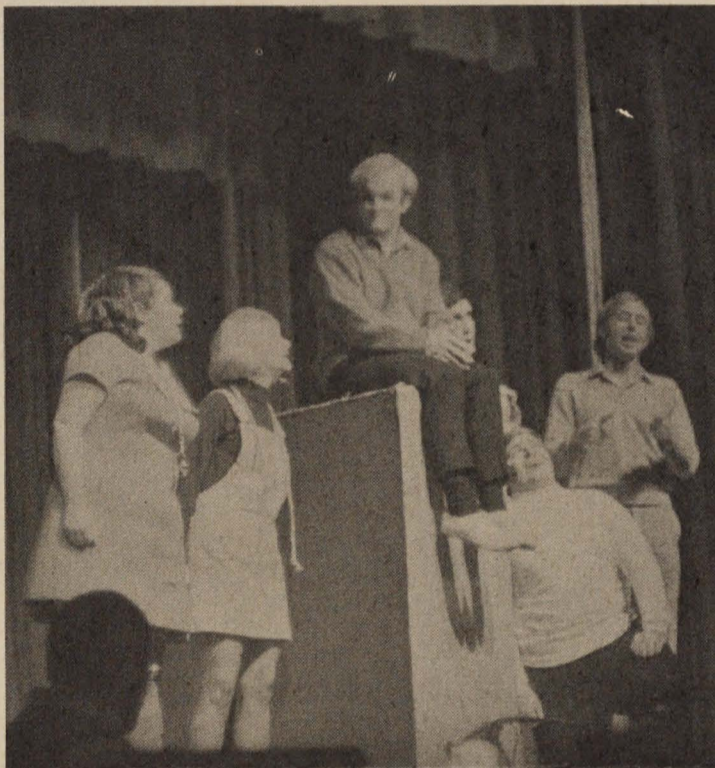
deserts; 6) hamburgers more often; 7) hard jello (?), occasional cold food, etc. Morgan promised action where necessary. He also handed out Food Service Surveys for the committee members to give to students of their choice.

The third meeting was held on December 2, 1971. Morgan brought in his District Manager, Carl Del Villaggio, and gave a summary of the results of the survey with approximately 60 students returning them. The overall opinions highlighted several problem areas. Most people were dissatisfied with the cleanliness of desks, trays, silverware and tables. Morgan stated that during Thanksgiving break the silver had been burnished, but that trays and dishes would continue to be a problem until he could get the workers to be conscientious about their jobs on the dish machine. The dish machine gets the plates hot enough to sanitize them but the trays will have food particles on them if they are not checked. All tables are cleaned after each meal, but they get messy during the meal

GOOD GRIEF! CHARLIE BROWN WAS IN TOWN

by Carol Roesler

"You're a Good Man, Charlie Brown" received a great deal of recognition during its casting at the Marian Hall Auditorium the tenth, eleventh and twelfth of December. The characters of Charles M. Schulz were brought to "real life" as promising talent of Marian College shared the limelight.



The cast of "Charlie Brown" (left to right): Patty Kane, Angie Beavin, Herb Finke, Pat O'Hara, Bill Ankenbrock, Pete O'Connell.

With Jack O'Hara directing, the cast included such favorites as Patty Kane in her role as Lucy. The humorousness of the acting was highlighted by both Patty's facial expressions and the loudness of her voice. Her arrogant manner in her role as Lucy made her funny as well as delightful.

Musically-inclined Schroeder was a Bach's delight. Pete O'Connell acted his part well as he played the dedicated musician.

Snoopy, that infamous little dog, was portrayed by Bill Ankenbrock. His musical talent shown through as Bill added his "dog's howl" to the singing chorus. Even though shooting down the Red Baron was not his

Linus brightened up the stage as he sang and danced to "My Blanket and Me."

And good grief! Last, but not least was that Good Man, Charlie Brown. Herb Finke, who liked the little girl with red hair, who struck out and therefore lost the ballgame for his friends, who procrastinated his book report, and who just couldn't quite get his kite up in the air, made a perfect Charlie Brown.

All in all, the casting of the characters made the play a widely accepted Christmas gift for all those in the Marian College Auditorium for this play.

With a little help from their friends, who just happened to be the musicians, directors, etc.,

the characters put the show on the road. The piano players were Nick Kira and Connie Knoll, and the drum accompanist was Jim Gemmell. Bobbie Donahue acted as assistant to the director; Gene Bourke designed the setting; Patty Kane, besides acting her role, was mistress of properties; Kathy O'Rourke acted as costume mistress and Joanne Johnson was in charge of lighting. Set construction crew was Mona Kowlowski, Mary Wuest and Pete O'Connell. Light crew was Kevin Caraher, Margie Freeland and Jim Sturm. Properties was Pam Sedam, and Don Johnson was program designer.

The success of "You're a Good Man, Charlie Brown" was evident by the way in which it was so widely accepted. Smaller children from schools throughout the city were entertained by the MC talent. Once again, all will be looking forward to the next production, which will be "Rashomon."

thing, he did his thing with one of the funniest points of the entire play his routine on the long-awaited supper bowl.

Cute little Patty, portrayed by Angie Beavin, a new face on the Marian cast production line, made her debut in the very beginning.

Security is what Linus thinks living is all about. Pat O'Hara as

if students are not careful. It was suggested that a sign be made asking everyone to give consideration to those eating at a table after the first group has left. It was stated that the tables are to be refinished during Christmas break to prevent the varnish from rubbing off.

Temperature of the food was also mentioned. Ron indicated that the front line was not heating properly and that it would be corrected. Employees would be instructed to be careful about dishing up too many plates ahead of time.

The committee members would like to hear comments from other students that they could convey to the Food Service Director. Please contact any of the following or let Morgan know so that these items can be discussed.

Clare Hall: Margaret Sohacki, Mary Elmlinger, and Therese Belles.

Doyle Hall: John Kirchgassner, Chris Everett, Steve Padgett, and Mike Isban.

Off-campus: Cheryl Colles.

Ron Morgan

ROAD SERVICE

Phone: 926-4913

6:00 a.m. - Midnight

100 Bonus Top Value Stamps

WITH

Lubrication AND Oil Change

With This Coupon At

BINDNER'S MARATHON
30th & Cold Spring Rd.
Indianapolis, Indiana

Phone: 926-4913

Good 'til Dec. 31, 1971

MUG RACK

3117 W. 30th St.

MENU INCLUDES: Pizza, Stromboli,

Ground Steak, Beer, Wine, and now, STEAK.

924-6211

FREE DELIVERY



HAPPY HOUR 4-6 Daily

KNIGHTS EDGE FRANKLIN; FALL TO EARLHAM

The Marian Knights, despite being hampered by a heavy foul load that sent three players to the bench, battled back from an early deficit to record their seventh straight victory over a tough bunch of Franklin Grizzlies by a 86-84 count.

Marian's devoted followers, who turned out in numbers to cheer for their beloved Knights, made the trip looking for a victory and were not disappointed as the locals made the ride home a pleasant one.

Big Jim Apke tallied a fielder for the Knights first score but for a while after that the points came few and far between for our starting favorites. The rebounding Grizzlies were sporting an 11-point lead until about mid-way through the opening half when the Knights rallied behind the hot shooting and passing of guard John Springman to close

the gap to a mere four points. A short while later big Joe Wade tallied on a beautiful reverse lay-up to pull the Knights within two, but the heavy foul load began to take its toll and our favorites had to settle for a 40-36 deficit at half.

Coach Schilling had his boys keyed up when they returned to the floor after intermission. Wade and Bill Smith hit back to back buckets to tie the score at 40 all and after a short while Wade again connected to put Marian in the lead for the first time.

The home team refused to quit and together with the aid of the men in the striped shirts vaulted back into the lead. Things looked bad for the Knights as the fouls kept building up and starting forward Apke was sent to the bench with five fouls. But in came the subs to the rescue and what a job

they did. Al Glaze, Rick Ebinger, Earl Brinker, and Mark Gayer came in and did a whale of a job to bail out the foul plagued starters.

With the score tied at 60, Glaze and Ebinger led a Knight charge to put us on top 73-66 with just over five minutes to play. Although the Grizzlies tried to fight back by cashing in on what seemed like innumerable charity tosses, the Schilling-coached Knights were really fired up and just weren't to be denied.

Ebinger was absolutely fantastic down the stretch as time and time again he sank crucial buckets to help the Knights maintain their lead. These crucial buckets were set up by the fine passing of guards Glaze and Springman. And when Springman fouled out late in the game, in came Ted Canfield to control

the tempo.

The outcome of the nip and tuck contest, played on Franklin's home boards, was much in doubt until co-captain Smith, with all the calmness in the world, sank two crucial free throws with four seconds left to seal the issue.

The Knights, who probably played their best game of the season thus far, were out-rebounded 39-32 but made up for it by hustling and scrapping for the loose balls and shooting 50% from the field.

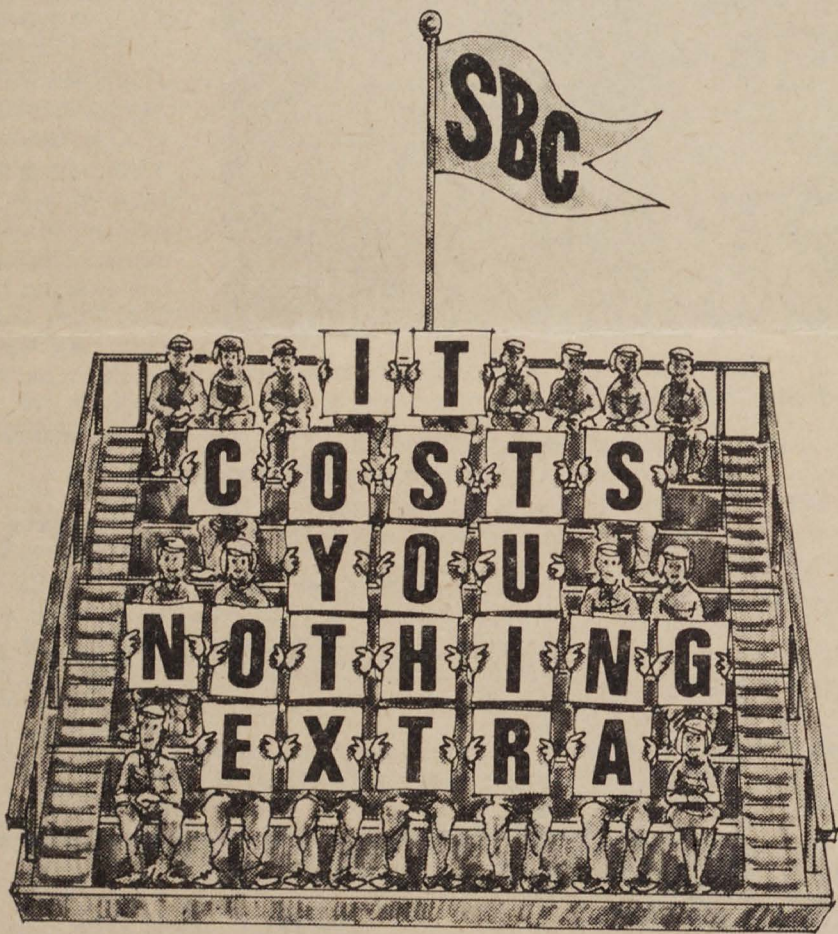
Joe Wade led the scoring parade with 19, but the Knights balance was in evidence as Springman added 18, Ebinger 17, Smith 16 and Glaze 10.

The whole team did a great job, and along with coach Schilling, who made the right moves at the right time, deserve to be commended for their fine effort.

Co-captain Smith, when asked to comment on the game, replied, 'We're really picking up fan support and it sure showed

at the Franklin game. Franklin is a good ball club and the great support of our fans definitely was a factor in the contest, as it helped keep our spirit high and morale up.'

The Knights suffered their first defeat of the season at the hands of Earlham's Quakers on Saturday night by a score of 111-100. The Quakers, who hit 64% from the field in the opening 20 minutes, ran up a 59-37 halftime lead and were never headed the rest of the way. The Knights came within five points at 105-100 with 0:25 remaining, but Earlham cashed in on six free throws in the closing seconds to produce the final winning margin. A definite factor in the Knights' loss was the foul situation. The Knights were whistled for 27 personals while a mere nine were called on Earlham. Bill Smith pumped in a career high 35 points for the losers while Jim Apke added 16.

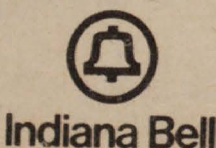


...and saves you money.

Your Student Billing Card is yours at no cost at the Indiana Bell Business Office. So, if you live in a dorm you can make long distance calls from your room simply by telling the operator your card number.

Calling by Student Billing Card eliminates the 25-cent additional charge made on every station-to-station "collect" call within Indiana.

If you're a dorm resident, get your card now!



KNIGHTS' SCHEDULE		
DECEMBER 17	- Kentucky State	- HERE
DECEMBER 18	- Purdue of Ft. Wayne	- THERE
JANUARY 3	- Xavier University	- THERE
JANUARY 5	- Wright State University	- HERE
JANUARY 8	- Purdue of Calumet	- THERE
JANUARY 11	- Taylor University	- HERE

Back the
Knights
in '72
Happy New Year!

Marian College Phoenix
3200 Cold Spring Road
Indianapolis, Indiana 46222

Nonprofit Org.
U.S. Postage
PAID
Indianapolis, Indiana
Permit No. 3127